

RIGGING SCREWS FORK-FORK

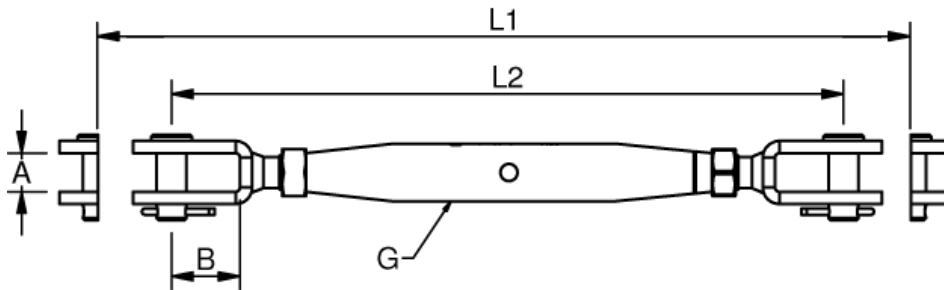
Polished Stainless Steel - AISI 316



ART. NO.	G	PIN	A	B	L1	L2	B.L./KG	KG/100	PACK
120005	M5	5,0	7,5	12,0	188	126	800	5,1	10
120006	M6	5,0	7,5	12,0	210	142	1250	9,0	10
120006X	M6	6,0	9,5	13,0	213	145	1250	14,0	10
120008	M8	6,0	9,5	13,0	251	170	1300	14,0	10
120008X	M8	8,0	11,0	15,0	258	178	2350	15,0	10
120010	M10	8,0	11,0	15,0	272	197	2350	24,0	10
120010X	M10	9,5	12,0	19,0	286	204	3500	26,0	10
120012	M12	12	14,0	25,0	359	251	5100	52,5	5
120012X	M12	14	18,0	32,0	375	269	5100	72,2	5
120014	M14	12	14,0	25,0	400	280	5900	63,5	5
120014X	M14	14	18,0	32,0	413	295	5900	84,5	5
120016	M16	14	18,0	32,0	480	320	8000	100,0	5
120016L	M16	14	22,0	30,0	472	312	8000	100,0	5
120016X	M16	16	18,0	33,0	479	319	8000	100,0	5
120020	M20	19	24,0	48,0	550	390	13000	197,0	BULK
120020L	M20	19	30,0	47,0	559	389	13000	197,0	BULK
! 120022	M22	22	30,0	57,0	653	472	17000	448,0	BULK
120024	M24	25	30,0	62,0	796	539	20000	638,0	BULK
120027	M27	28	32	68	825	590	25500	501,0	BULK
120030	M30	32	35	76	907	647	31000	1060,0	BULK
120036	M36	35	40	86	990	715	43000	1657,0	BULK

Note: All breakloads are determined by clevis pin and thread

! M20> M36 Available with threaded Bronze inserts in a S/S Body



The larger size rigging screws from M20 and up are designed with a rounded fork head and are available with Stainless Steel with bronze threaded inserts for smooth adjustment .

Most rigging screws are also available with open body & UNF thread, on request.

RIGGING SCREWS FORK-TERMINAL

Polished Stainless Steel - AISI 316



ART. NO.	G	WIRE	PIN	A	B	D	L1	L2	B.L./KG	KG/100	PACK
120205	M5	2,0	5	7,5	9,4	5,50	198	144	800	4,5	10
122505	M5	2,5	5	7,5	9,4	5,50	201	147	800	4,6	10
120306	M6	3,0	5	7,5	9,4	6,35	232	170	1200	8,5	10
120306X	M6	3,0	6	9,5	10,4	6,35	233	171	1200	8,5	10
120406	M6	4,0	5	7,5	10,4	7,50	242	180	1200	8,7	10
120406X	M6	4,0	6	9,5	10,4	7,50	242	180	1200	9,1	10
120408	M8	4,0	6	9,5	10,4	7,50	275	199	1600	13,0	10
120408X	M8	4,0	8	11,0	12,2	7,50	277	201	1700	13,0	10
120508	M8	5,0	6	9,5	13,0	9,00	281	205	1600	13,2	10
120508X	M8	5,0	8	11,0	12,2	9,00	284	208	2200	14,8	10
120510	M10	5,0	8	11,0	14,0	9,00	312	228	2500	22,5	10
120510X	M10	5,0	9,5	12,0	14,0	9,00	316	232	2500	22,5	10
120610	M10	6,0	8	11,0	15,0	12,58	327	243	3200	25,6	10
120610X	M10	6,0	9,5	12,0	18,5	12,58	330	250	3500	27,4	10
120612	M12	6,0	12	14,0	18,5	12,58	393	287	5100	47,5	5
120712	M12	7,0	12	14,0	25,0	14,20	401	295	5100	50,0	5
120812	M12	8,0	12	14,0	25,0	16,00	416	310	5100	53,5	5
120714	M14	7,0	12	14,0	25,0	14,20	439	319	6800	58,0	5
120714X	M14	7,0	14	18,0	33,0	14,20	453	335	6800	68,8	5
120814	M14	8,0	12	14,0	25,0	16,00	453	333	6800	63,5	5
120816	M16	8,0	14	18,0	32,0	16,00	498	365	8700	89,5	5
120816L	M16	8,0	14	22,0	30,0	16,00	494	361	8700	89,5	5
120816X	M16	8,0	16	18,0	33,3	16,00	499	366	8700	89,5	5
121016	M16	10,0	14	18,0	33,0	17,80	506	373	9400	93,0	5
121016L	M16	10,0	14	22,0	33,0	17,80	504	371	9400	93,0	5
121016X	M16	10,0	16	18,0	33,0	17,80	510	376	9400	93,0	5
121020	M20	10,0	19	24,0	38,3	17,80	587	427	9700	170,1	BULK
121220	M20	12,0	19	24,0	38,3	20,00	606	446	11400	170,1	BULK
* 121220X	M20	12,0	19	24,0	38,3	21,40	622	462	14200	170,1	BULK
121422	M22	14,0	22	30,0	46,0	25,00	736	555	15900	452,0	BULK
121622	M22	16,0	22	30,0	57,5	28,00	696	588	18000	490,0	BULK
121424	M24	14,0	25,4	30,0	47,8	25,00	846	613	15900	642,0	BULK
121624	M24	16,0	25,4	30,0	47,8	28,00	874	641	19400	662,0	BULK
121927	M27	19,0	28	32,0	68,0	34,50	968	734	23000	878,0	BULK
122230	M30	22,0	32	35,0	76,0	40,50	1106	822	28000	1074,0	BULK
122636	M36	26,0	35	40,0	86,0	46,00	1195	921	41000	1682,0	BULK

* Note: Terminal OD. = 21,4 mm

! M20> M36 Available with threaded Bronze inserts in a S/S Body

