

RIGGING SCREWS MACHINED FORK-TERMINAL

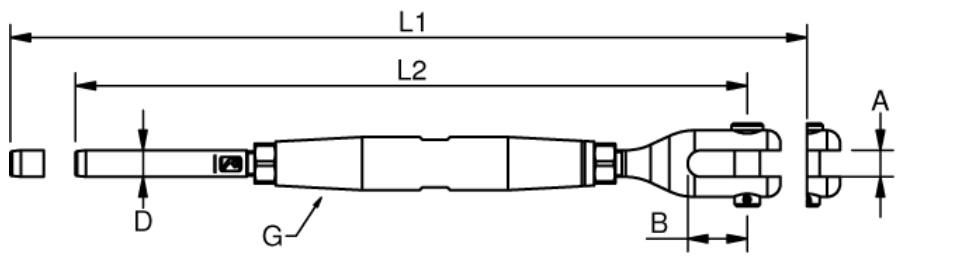
Polished Stainless Steel - AISI 316



ART. NO.	G	WIRE	PIN	A	B	D	L1	L2	B.L./KG	KG/100	PACK
741220	M20	12	19	20	45	20	646	492	11400	240	BULK
741422	M22	14	22	22	49	25	720	540	15000	649	BULK
741622	M22	16	22	22	49	28	745	565	15000	670	BULK
741624	M24	16	25	25	52	28	863	630	18000	876	BULK
741927	M27	19	28	30	55	34,5	963	728	23000	1332	BULK
742230	M30	22	32	35	67	40,5	1082	820	28000	1888	BULK
742636	M36	26	35	35	67	46	1186	912	41000	2484	BULK
742842	M42	28	40	34	75	50	1298	992	70000	2328	BULK
743048	M48	30	45	38	91	50	1461	1129	75000	3175	BULK
743248	M48	32	45	38	91	58	1461	1131	90000	3214	BULK
743652	M52	36	50	49	100	65	1628	1258	110000	4305	BULK

As demand for larger wire sizes has been growing, so has the range of larger machined fittings by Blue Wave. The machined forks are, as most fittings by Blue Wave, marked with wire size and swage depth marking for ease of use.

All breakloads are determined by clevis pin and thread
Body with threaded Bronze inserts



RIGGING SCREWS MACHINED FORK-FORK

Polished Stainless Steel - AISI 316



ART. NO.	G	PIN	A	B	L1	L2	B.L./KG	KG/100	PACK
740020	M20	19	20	45	619	453	12000	330	BULK
740022	M22	22	22	49	637	456	15000	892	BULK
740024	M24	25	25	52	763	530	18000	1193	BULK
740027	M27	28	30	55	813	578	23000	1803	BULK
740030	M30	32	35	67	918	656	28000	2614	BULK
740036	M36	35	35	67	970	696	41000	3390	BULK
740042	M42	40	34	75	1082	782	70000	2485	BULK
740048	M48	45	38	91	1222	892	90000	3406	BULK
740052	M52	50	49	100	1360	988	110000	4608	BULK

All breakloads are determined by clevis pin and thread
Body with threaded Bronze inserts

