

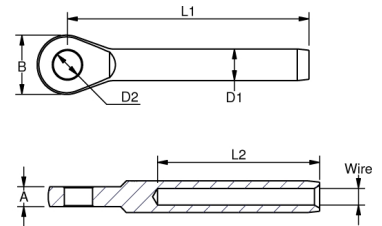
## EYE TERMINALS

Polished Stainless Steel - **AISI 316**

ART. NO.	WIRE	A	B	D1	D2	L1	L2	B.L./KG	KG/100	PACK
190002	2 1/16"	3	12	5,50	5,5	41	24	1200	0,9	100
190025	2,5 3/32"	3	12	5,50	5,5	44	27	1000	0,8	100
190003	3 1/8"	4	14	6,35	6,5	60	38	1300	1,3	100
190332	1/8"	4	14	6,35	6,5	60	38	1300	1,4	100
190004	4 5/32"	5	17	7,50	8,5	67	45	1700	2,3	100
190005	5 3/16"	6	21	9,00	10,5	79	51	2400	3,9	25
190006	6 -	8	25	12,58	13,0	94	64	5500	8,7	10
190006X	6 -	10	28	12,58	13,2	105	64	5500	11,2	10
190007	7 9/32"	9	27	14,20	13,0	104	70	6800	11,5	10
190007X	7 9/32"	10	28	14,20	13,2	110	70	6800	13,5	10
190008	8 5/16"	10	30	16,00	14,5	124	83	8000	17,0	10
190008D	8 5/16"	10	30	13,00	14,5	123,5	83	4600	13,5	10
190008X	8 5/16"	12	36	16,00	16,5	141	83	8700	23,5	10
190010	10 -	11	35	17,80	16,3	137	89	9700	25,0	10
190010X	10 -	16	40	17,80	19,5	165	100	9700	38,0	10
190012	12 -	15	40	20,00	19,3	156	105	11400	41,5	5
190012X	12 -	15	42	21,40	19,3	178	120	14200	41,0	5
190014	14 -	18	47	25,00	23,0	206	140	15900	75,6	5
190016	16 -	20	53	28,00	26,0	232	160	19000	102,0	5
190019	19 -	25	65	34,50	28,5	302	200	31000	209,0	BULK
190020	20	25	65	34,50	28,5	302	200	31000	199,8	BULK
190022	22 -	30	70	40,40	33,0	348	230	42000	314,0	BULK
190026	26 -	30	77	46,00	36,0	400	280	53000	425,0	BULK
190028	28 -	38	84	50,00	40,5	445	300	64000	602,4	BULK



Blue Wave Eye terminals are engraved with the wire size and swage depth, making them easier to work with and to press or swage onto the wire. Eyes are mainly used as an attachment to rigging screws or forks.

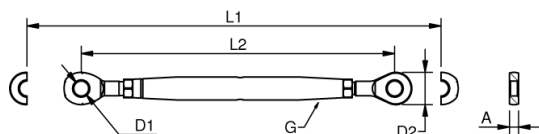


## RIGGING SCREWS EYE-EYE

Polished Stainless Steel - **AISI 316**

ART. NO.	G	A	D1	D2	L1	L2	B.L./KG	KG/100	PACK
191905	M5	3,0	5,5	12,0	190	131	800	4	10,0
191906	M6	4,0	6,5	14,0	204	136	1200	11	10,0
191908	M8	5,0	8,5	17,0	244	164	2200	14	5,0
191910	M10	6,0	10,5	22,0	270	187	3500	23	5,0
191912	M12	8,0	13,0	25,0	334	226	5100	38	5,0
191914	M14	9,0	13,0	28,0	376	257	6800	51	BULK
191916	M16	10,0	14,5	31,0	408	278	9400	73	BULK
191920	M20	15,0	19,5	40,0	488	334	14700	105	BULK
191922	M22	18,0	23,0	47,0	597	416	15200	354	BULK
191924	M24	20,0	26,0	53,0	713	480	17700	670	BULK
191927	M27	25,0	28,5	65,0	759	527	23000	710	BULK
191930	M30	30,0	33,0	70,0	861	581	28000	991	BULK
191936	M36	30,0	36,0	80,0	892	618	41000	1288	BULK

Note: All breakloads are determined by eye (D1) & thread  
M20 > M36 Available with threaded Bronze inserts in a S/S Body



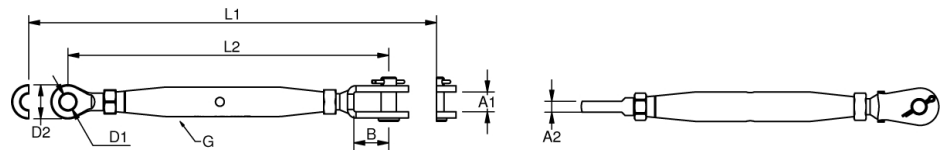


## RIGGING SCREWS EYE-FORK

Polished Stainless Steel - AISI 316

ART. NO.	G	PIN	A1	B	A2	D1	D2	L1	L2	B.L./KG	KG/100	PACK
191205	M5	5,0	7,5	12	3	5,5	12	188	129	800	4,2	BULK
191206	M6	5,0	7,5	12	4	6,5	14	206	138	1000	6,3	BULK
191208	M8	6,0	9,5	13	5	8,5	17	244	164	1600	13,0	BULK
191210	M10	8,0	11,0	15	6	10,5	21	271	188	3200	21,9	BULK
191212	M12	12,0	14,5	25	8	13,0	25	343	235	5100	44,0	BULK
191214	M14	12,0	14,5	25	9	13,0	28	381	262	6900	60,0	BULK
191216	M16	14,0	18,0	33	10	14,5	31	426	296	9400	85,6	BULK
191220	M20	19,0	24,0	50	15	19,5	40	518	364	14000	169,3	BULK
191222	M22	22,0	30,0	57	18	23,0	47	625	444	15200	398,5	BULK
191224	M24	25,4	30,0	62	20	26,0	53	741	508	17700	580,0	BULK

M20 > M24 Available with threaded Bronze inserts in a S/S Body



## RIGGING SCREWS EYE-TERMINAL

Polished Stainless Steel - AISI 316

ART. NO.	G	WIRE	A	D1	D2	D3	L1	L2	B.L./KG	KG/100	PACK
190205	M5	2	3	2,2	5,5	5,5	205	143	800	3,7	BULK
192505	M5	2,5	3	2,8	5,5	5,5	208	146	800	3,4	BULK
190306	M6	3	4	3,5	6,4	6,5	234	166	1200	6,3	BULK
190406	M6	4	4	4,4	7,5	6,5	244	176	1200	6,7	BULK
190408	M8	4	5	4,4	7,5	8,5	282	202	1700	12,4	BULK
190508	M8	5	5	5,3	9,0	8,5	288	208	2200	13,4	BULK
190510	M10	5	6	5,3	9,0	10,5	311	227	2500	19,5	BULK
190610	M10	6	6	6,5	12,6	10,5	326	242	3400	23,4	BULK
190612	M12	6	8	6,5	12,6	13,0	379	271	5000	38,5	BULK
190712	M12	7	8	7,5	14,2	13,0	387	279	5000	40,8	BULK
190812	M12	8	8	8,4	16,0	13,0	400	292	5000	51,1	BULK
190714	M14	7	9	7,5	14,2	13,0	432	314	6800	46,7	BULK
190814	M14	8	9	8,4	16,0	13,0	446	328	6800	55,1	BULK
190816	M16	8	10	8,4	16,0	14,5	478	350	8700	74,6	BULK
191016	M16	10	10	10,5	17,8	14,5	495	367	9400	86,6	BULK
191020	M20	10	15	10,5	17,8	19,3	593	405	9700	126,9	BULK
1912T20	M20	12	15	12,5	20,0	19,5	573	419	11500	136,9	BULK
1912T20X	M20	12	15	12,5	21,4	19,5	599	435	14200	152,8	BULK
191422X	M22	14	18	14,8	25,0	23,0	708	527	15200	163,8	BULK
191624X	M24	16	20	17,0	28,0	26,0	846	613	17700	233,6	BULK
191927X	M27	19	25	20,0	34,5	29,0	934	702	23000	394,0	BULK
192230X	M30	22	30	23,5	40,5	33,0	1057	777	28000	1090,4	BULK
192636X	M36	26	30	27,5	46,0	36,0	1150	873	41000	1446,8	BULK

M20 > M36 Available with threaded bronze inserts in a s/s body

