

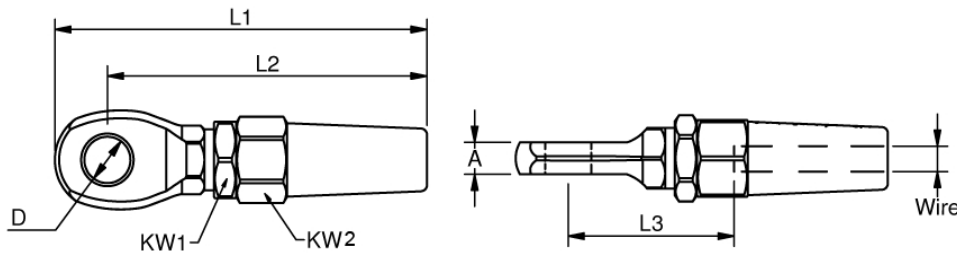
# SWAGELESS EYE TERMINALS

High Polished Stainless Steel - AISI 316

ART. NO.	WIRE	A	D1	L1	L2	L3	KW1	KW2	B.L./KG	KG/100	ART. NO. RE-FIT JAWS
821903	3 1/16"	5,5	6,3	58	50	26,5	10	12	750	4,0	080003
821904	4 5/32"	7	8,3	68	58	31,0	13	14	1500	7,3	080004
821905	5	-	8	10,3	81	37,0	14	16	2180	9,8	080005
821906	6 1/4"	9	12,3	97	83	45,0	17	19	3700	15,0	080006
821907	7 9/32"	9	12,3	105	89	50,5	18	21	4700	21,2	080007
821908	8 5/16"	10	14,3	114	97,5	52,5	19	24	5600	28,1	080008
821910	10	-	13	16,3	135	65,0	24	27	8300	46,0	080010
821912	12	-	15	19,5	160	71,5	27	32	12000	72,0	080012
821914	14	-	18	22	185	85,0	30	36	14000	110,0	080014
821916	16	-	20	25	197	98,0	32	41	23000	160,0	080016

Note: All breakloads are determined by wedges (jaws) and eye (D2)

Assembly instruction look at page 15



Safe, reliable and machine free swaging of wire, with the fastest swageless system on the market.

The Blue Wave swageless eye terminals are Lloyds approved and ideal for site work where a professional swaging tool would normally be required.



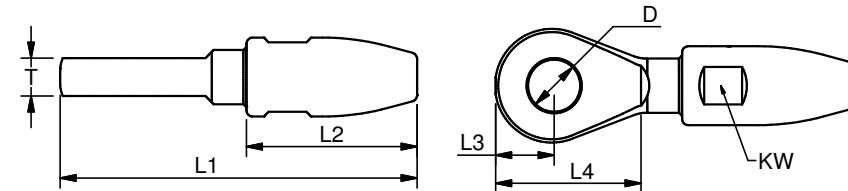
## SWAGELESS EYE TERMINAL WITH CONE

Stainless Steel - AISI 316

ART. NO.	WIRE	D	T	KW	L1	L2	L3	L4	BL/KG	KG/100
SC822516	16 5/8"	26	20	42	187	100	28	69	28000	144,5
SC822819	19 3/4"	28,5	25	44	220	115	33	83	30000	215
SC823522	22 7/8"	35,5	30	50	250	125	40	100	38000	320
SC823526	26 1"	35,5	30	66	280	150	40	100	48000	535



In addition to the Lloyds approved swageless system, the swageless cone terminal for 1x19 wire construction enables safe and reliable wire attachment up till Ø 26 mm diameter.



## EYE TERMINALS - SMALL

Stainless Steel - AISI 316

ART. NO.	WIRE	B	D1	D2	L1	L2	L3	L4	A	KG/100
A200503	3,0 1/8"	9	5,5	5,3	36	25	11	6,0	2,50	0,5
A200504	4,0 5/32"	10	6,4	5,3	38	25	12	6,5	3,00	0,7
A200505	5,0 3/16"	11	7,5	5,3	43	30	13	7,0	3,75	1,0
A200606	6,0	-	14	9,0	62	40	16	8,5	4,50	1,9



Blue Wave's small Eye terminals are for lighter architectural terminations. The focus of the design is the size. Overall dimensions have thus been reduced to a minimum. The small fittings are suitable for hand crimping with Blue Wave Arctool Acc1 & Arctool8, see page 66+67, or roll swaged using a standard machine and smaller die.

