



## WDS ADJUSTER FORKS

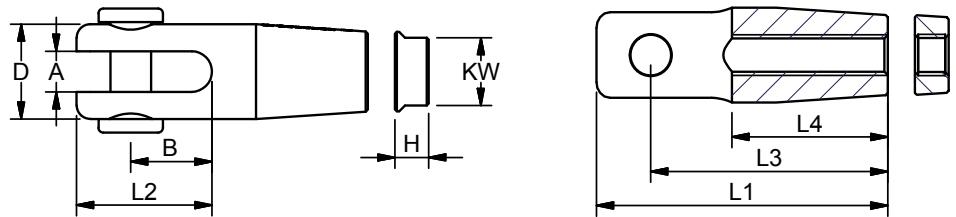
Polished Stainless Steel - AISI 316

As a alternative to wire systems, tie-bars may be used - especially for static structures such as balcony supports, glassed façade structures etc. Standard components are Adjuster forks and inside threaded connectors for tie-bars. The tie bars are available on request, can be delivered with or without key width as well as a polished or unpolished version. Adjuster eyes can also be delivered on request.

NO. RIGHT	NO. LEFT	G	PIN	A	B	H	D1	L1	L2	L3	L4	KW	B.L./ KG	KG/100
C700606	C710606	M6	6	6	12,0	5	14	43	20,0	35,0	26	10	1200	3,7
C700808	C710808	M8	8	7	15,0	7	18	54	25,5	43,5	32	13	2200	7,7
C701010	C711010	M10	10	8	18,0	8	22	66	31,0	53,0	39	16	3400	14,6
C701212	C711212	M12	12	10	22,0	10	26	78	37,0	63,0	46	19	5000	22,8
C701616	C711616	M16	16	12	27,0	12	34	100	46,5	80,5	59	23	9400	51,5
C702020	C712020	M20	20	15	33,5	14	42	122	57,5	98,0	72	29	14000	95,6
C702224	C712224	M24	22	25	45,5	16	55	150	75,0	120,0	75	36	21000	178,6

Note: All breakloads are determined by clevis pin (Fork) and thread.

Note: Threaded Tie Bars in various lengths are available on request



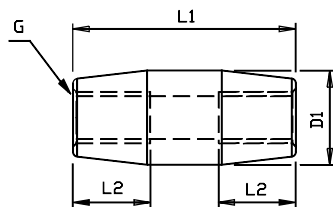
## CONNECTOR

Polished Stainless Steel - AISI 316



ART. NO.	G	D1	L1	L2	B.L./KG	KG/100	PACK
087006	M6	11,0	26	9	1200	1,2	BULK
087008	M8	12,5	33	12	2200	1,8	BULK
087010	M10	17,0	39	15	3400	4,0	BULK
087012	M12	22,0	52	18	5000	9,6	BULK
087016	M16	28,0	65	24	9400	19,3	BULK
087020	M20	33,5	78	30	14000	32,2	BULK
087024	M24	44,0	104	36	21000	79,0	BULK

Note: Threaded Tie Bars in various lengths are available on request



## TIE BAR AISI 316

ART. NO. DIM MM

TIExxx Ø 6-24



on request only